



St. Vincent Hot Springs

Compared by: Teaching Status

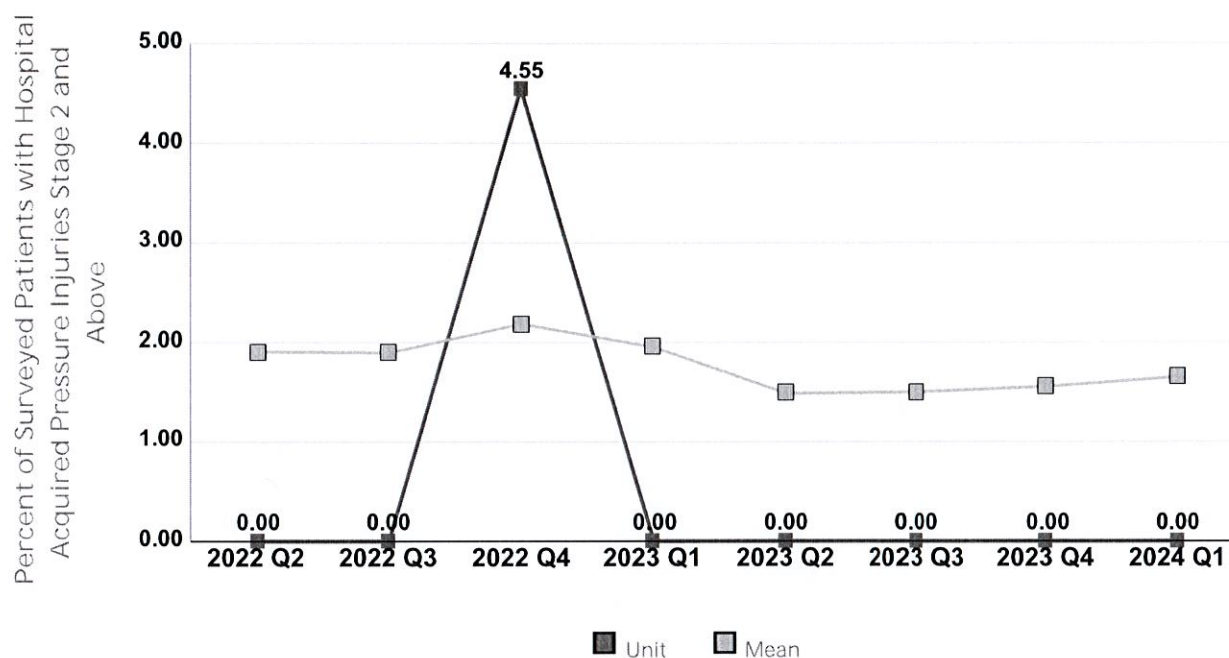
Peer Group: Teaching Facilities

Unit Type: Adult Medical

Unit: Cardiology

Measure: Percent of Surveyed Patients with Hospital Acquired Pressure Injuries Stage 2 and Above

Measure Compared to Mean



Quarter	2022 Q2	2022 Q3	2022 Q4	2023 Q1	2023 Q2	2023 Q3	2023 Q4	2024 Q1
Unit	0.00	0.00	4.55	0.00	0.00	0.00	0.00	0.00
NDNQI- Teaching Facilities-Mean	1.90	1.89	2.18	1.95	1.48	1.50	1.55	1.65

If the number of units or hospitals is less than five, comparison data are suppressed to maintain confidentiality. If the number of units or hospitals is less than 20, comparison data may vary substantially over the time period and should be used with caution. For additional information, please refer to NDNQI reference documents.



St. Vincent Hot Springs

Compared by: Teaching Status

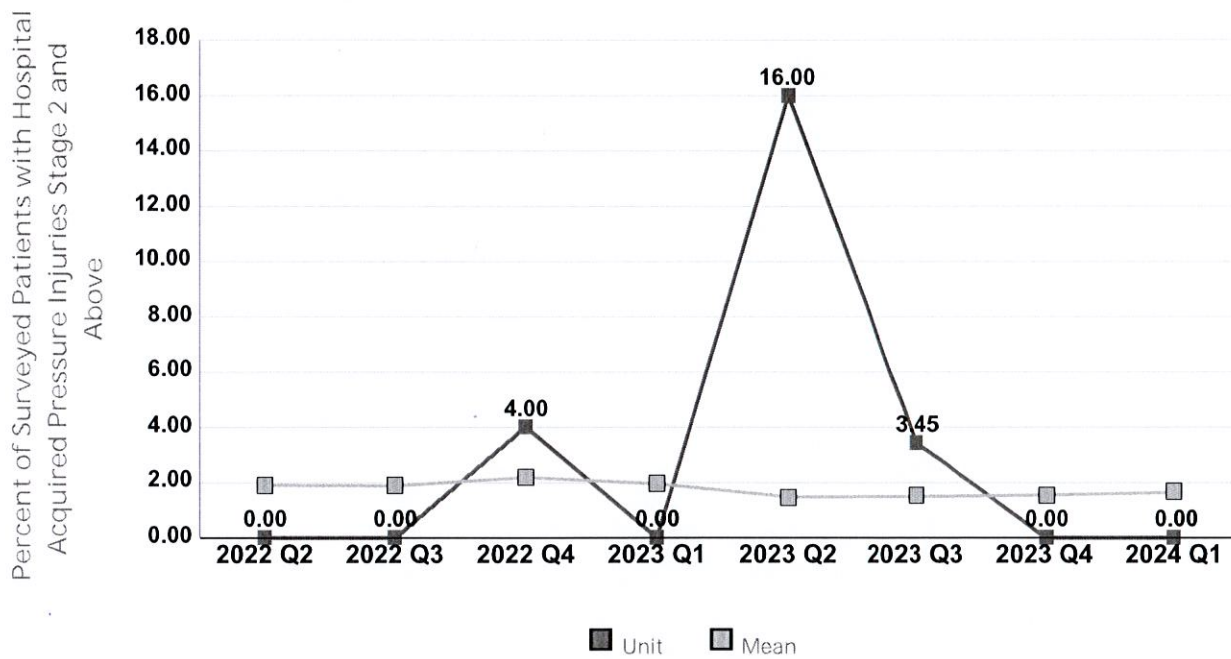
Peer Group: Teaching Facilities

Unit Type: Adult Medical

Unit: Oncology/Renal

Measure: Percent of Surveyed Patients with Hospital Acquired Pressure Injuries Stage 2 and Above

Measure Compared to Mean



Quarter	2022 Q2	2022 Q3	2022 Q4	2023 Q1	2023 Q2	2023 Q3	2023 Q4	2024 Q1
Unit	0.00	0.00	4.00	0.00	16.00	3.45	0.00	0.00
NDNQI- Teaching Facilities-Mean	1.90	1.89	2.18	1.95	1.48	1.50	1.55	1.65

If the number of units or hospitals is less than five, comparison data are suppressed to maintain confidentiality. If the number of units or hospitals is less than 20, comparison data may vary substantially over the time period and should be used with caution. For additional information, please refer to NDNQI reference documents.

St. Vincent Hot Springs

Compared by: Teaching Status

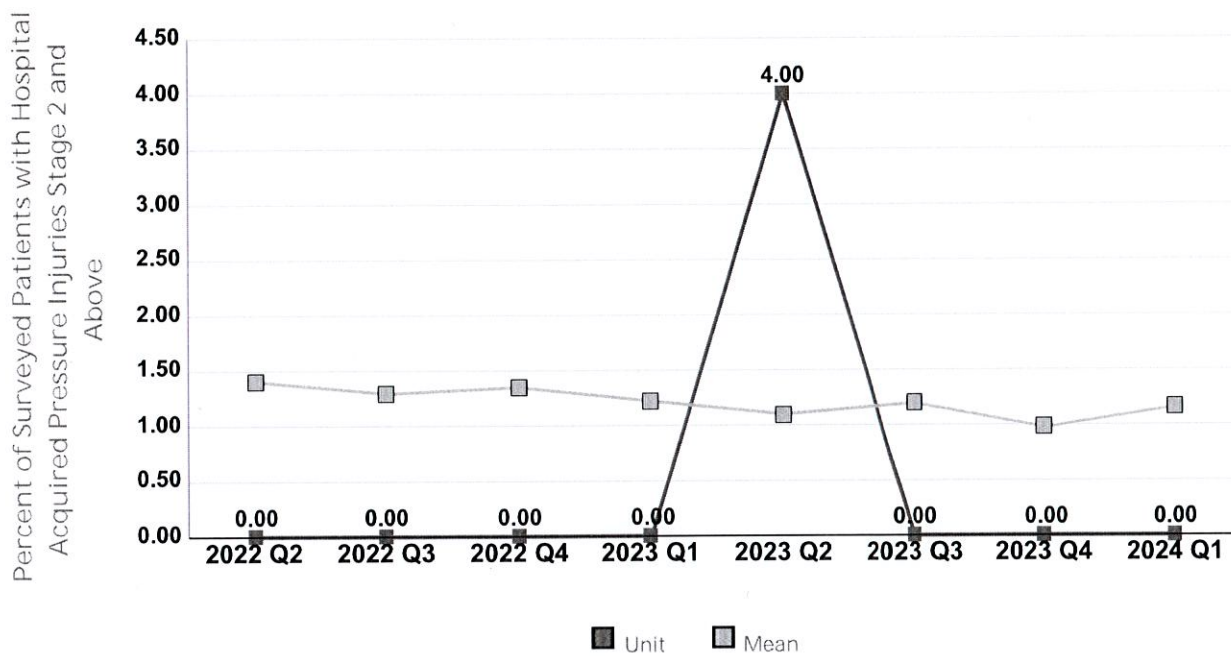
Peer Group: Teaching Facilities

Unit Type: Adult Surgical

Unit: Ortho/Neuro

Measure: Percent of Surveyed Patients with Hospital Acquired Pressure Injuries Stage 2 and Above

Measure Compared to Mean



Quarter	2022 Q2	2022 Q3	2022 Q4	2023 Q1	2023 Q2	2023 Q3	2023 Q4	2024 Q1
Unit	0.00	0.00	0.00	0.00	4.00	0.00	0.00	0.00
NDNQI- Teaching Facilities-Mean	1.40	1.29	1.35	1.22	1.10	1.19	0.97	1.16

If the number of units or hospitals is less than five, comparison data are suppressed to maintain confidentiality. If the number of units or hospitals is less than 20, comparison data may vary substantially over the time period and should be used with caution. For additional information, please refer to NDNQI reference documents.



St. Vincent Hot Springs

Compared by: Teaching Status

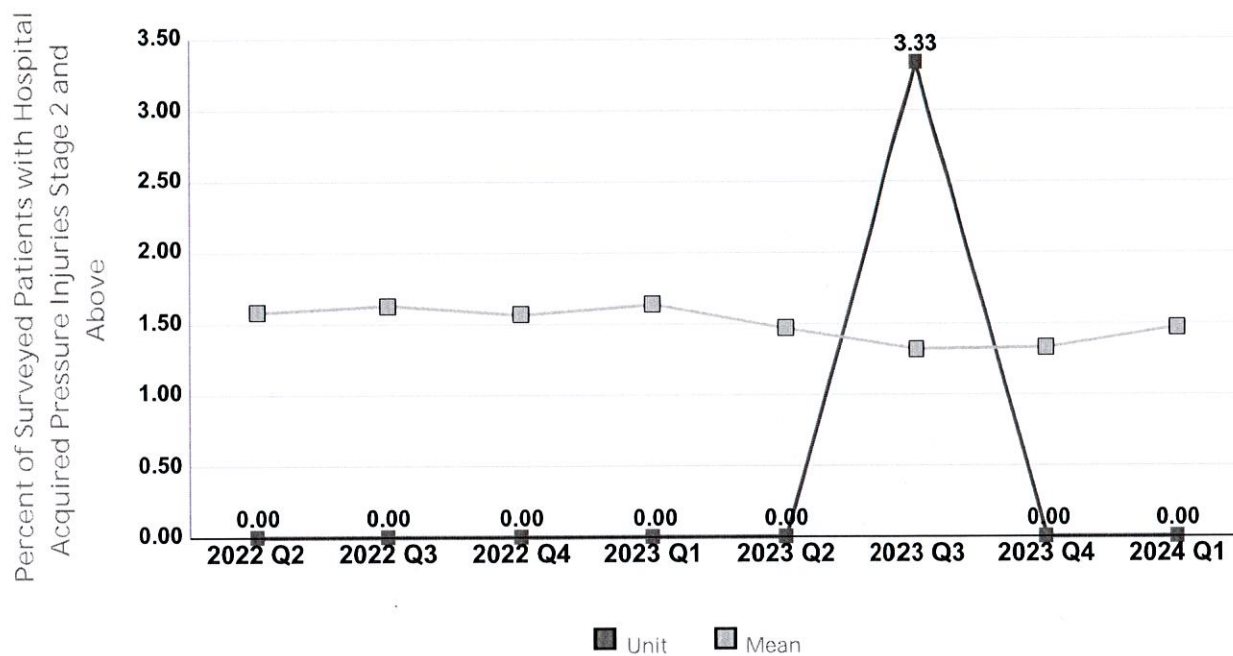
Peer Group: Teaching Facilities

Unit Type: Adult Med-Surg Combined

Unit: Medical / Surgical

Measure: Percent of Surveyed Patients with Hospital Acquired Pressure Injuries Stage 2 and Above

Measure Compared to Mean



Quarter	2022 Q2	2022 Q3	2022 Q4	2023 Q1	2023 Q2	2023 Q3	2023 Q4	2024 Q1
Unit	0.00	0.00	0.00	0.00	0.00	3.33	0.00	0.00
NDNQI- Teaching Facilities-Mean	1.58	1.63	1.56	1.64	1.46	1.32	1.33	1.47

If the number of units or hospitals is less than five, comparison data are suppressed to maintain confidentiality. If the number of units or hospitals is less than 20, comparison data may vary substantially over the time period and should be used with caution. For additional information, please refer to NDNQI reference documents.



St. Vincent Hot Springs

Compared by: Teaching Status

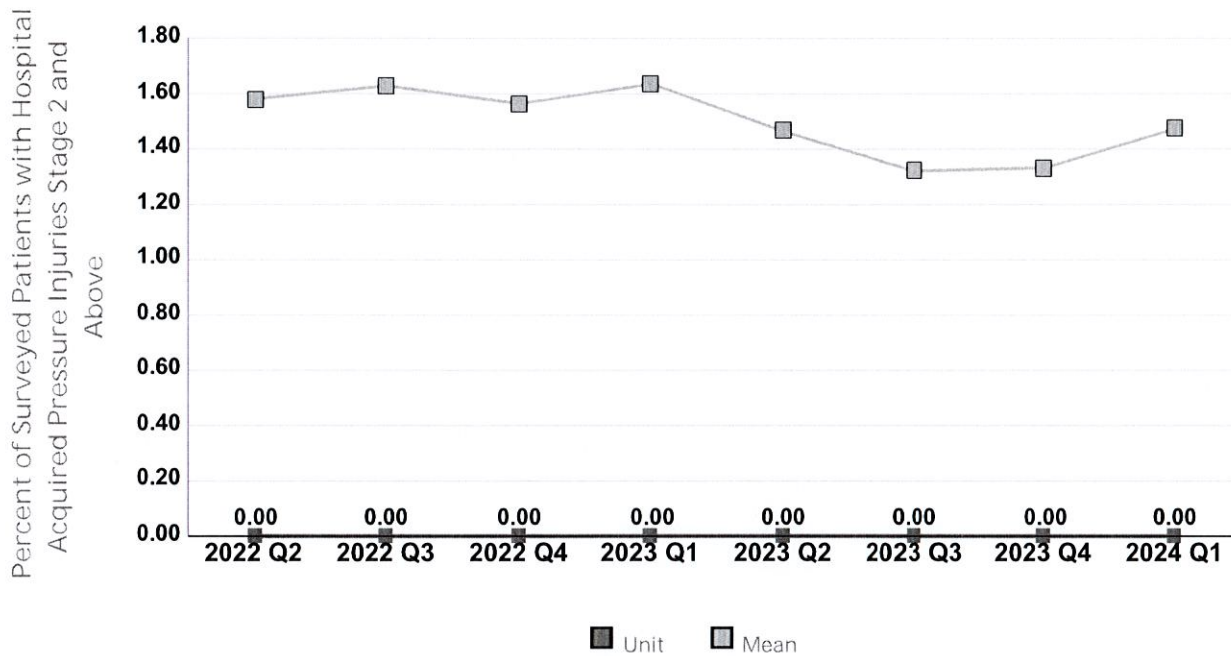
Peer Group: Teaching Facilities

Unit Type: Adult Med-Surg Combined

Unit: Medical Surgical / Pediatrics (COVID-19)

Measure: Percent of Surveyed Patients with Hospital Acquired Pressure Injuries Stage 2 and Above

Measure Compared to Mean



Quarter	2022 Q2	2022 Q3	2022 Q4	2023 Q1	2023 Q2	2023 Q3	2023 Q4	2024 Q1
Unit	0.00	0.00	0.00	0.00	0.00	0.00	0.00	0.00
NDNQI- Teaching Facilities-Mean	1.58	1.63	1.56	1.64	1.46	1.32	1.33	1.47

If the number of units or hospitals is less than five, comparison data are suppressed to maintain confidentiality. If the number of units or hospitals is less than 20, comparison data may vary substantially over the time period and should be used with caution. For additional information, please refer to NDNQI reference documents.



St. Vincent Hot Springs

Compared by: Teaching Status

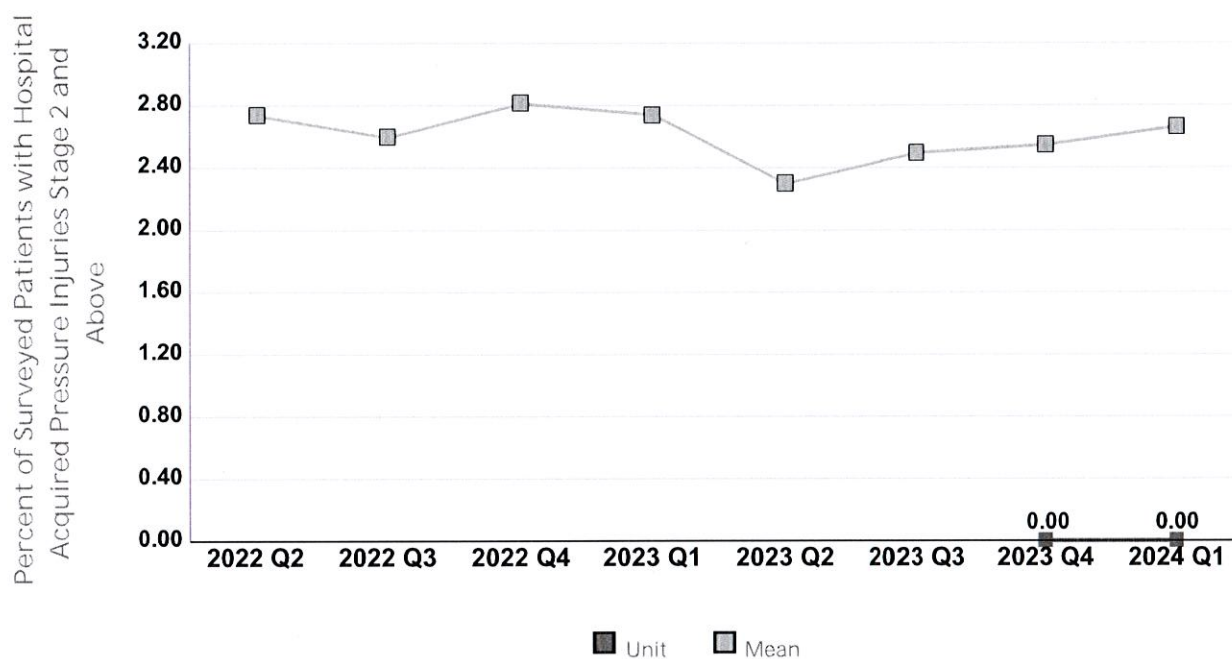
Peer Group: Teaching Facilities

Unit Type: Adult Step Down

Unit: Step Down

Measure: Percent of Surveyed Patients with Hospital Acquired Pressure Injuries Stage 2 and Above

Measure Compared to Mean



Quarter	2022 Q2	2022 Q3	2022 Q4	2023 Q1	2023 Q2	2023 Q3	2023 Q4	2024 Q1
Unit	No Data	No Data	No Data	No Data	No Data	No Data	0.00	0.00
NDNQI- Teaching Facilities-Mean	2.73	2.59	2.81	2.74	2.30	2.49	2.54	2.66

If the number of units or hospitals is less than five, comparison data are suppressed to maintain confidentiality. If the number of units or hospitals is less than 20, comparison data may vary substantially over the time period and should be used with caution. For additional information, please refer to NDNQI reference documents.



St. Vincent Hot Springs

Compared by: Teaching Status

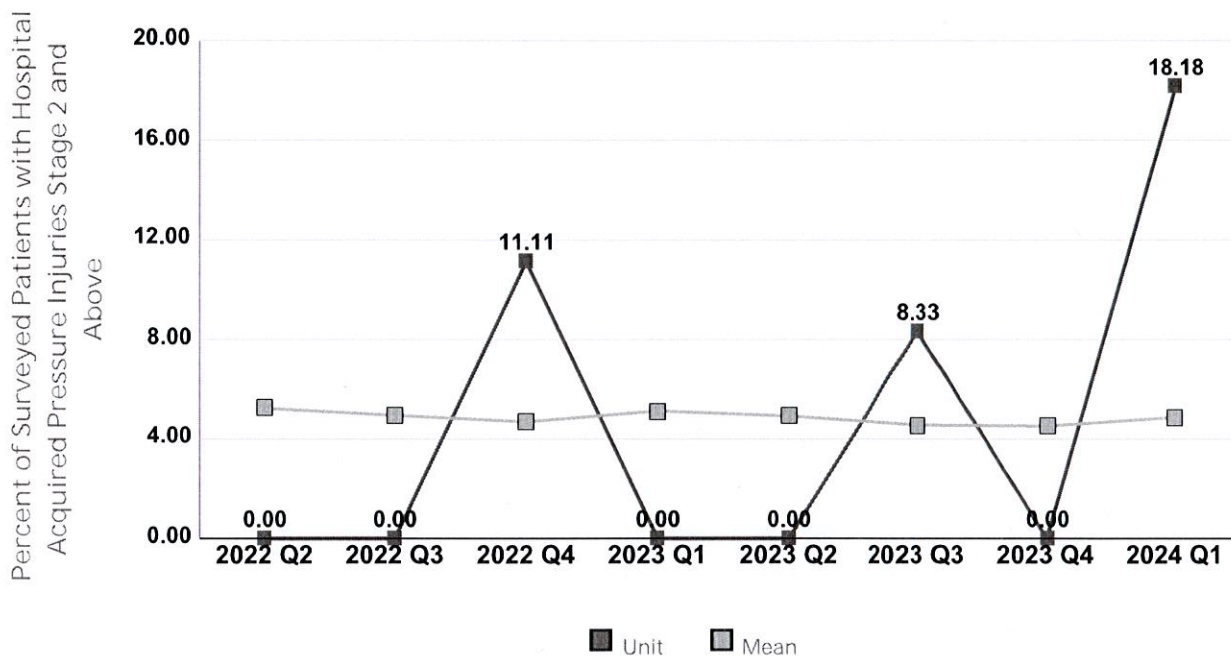
Peer Group: Teaching Facilities

Unit Type: Adult Critical Care

Unit: Medical ICU

Measure: Percent of Surveyed Patients with Hospital Acquired Pressure Injuries Stage 2 and Above

Measure Compared to Mean



Quarter	2022 Q2	2022 Q3	2022 Q4	2023 Q1	2023 Q2	2023 Q3	2023 Q4	2024 Q1
Unit	0.00	0.00	11.11	0.00	0.00	8.33	0.00	18.18
NDNQI- Teaching Facilities-Mean	5.23	4.94	4.69	5.12	4.92	4.56	4.52	4.86

If the number of units or hospitals is less than five, comparison data are suppressed to maintain confidentiality. If the number of units or hospitals is less than 20, comparison data may vary substantially over the time period and should be used with caution. For additional information, please refer to NDNQI reference documents.



St. Vincent Hot Springs

Compared by: Teaching Status

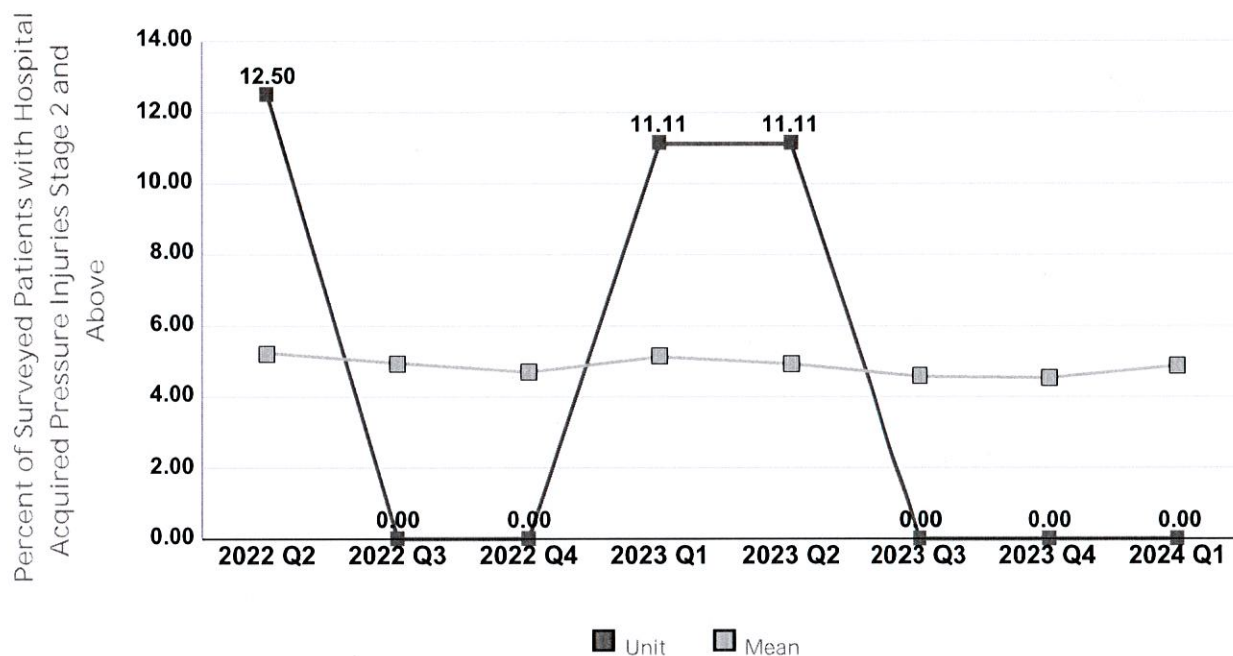
Peer Group: Teaching Facilities

Unit Type: Adult Critical Care

Unit: Surgical ICU (COVID-19)

Measure: Percent of Surveyed Patients with Hospital Acquired Pressure Injuries Stage 2 and Above

Measure Compared to Mean



Quarter	2022 Q2	2022 Q3	2022 Q4	2023 Q1	2023 Q2	2023 Q3	2023 Q4	2024 Q1
Unit	12.50	0.00	0.00	11.11	11.11	0.00	0.00	0.00
NDNQI- Teaching Facilities-Mean	5.23	4.94	4.69	5.12	4.92	4.56	4.52	4.86

If the number of units or hospitals is less than five, comparison data are suppressed to maintain confidentiality. If the number of units or hospitals is less than 20, comparison data may vary substantially over the time period and should be used with caution. For additional information, please refer to NDNQI reference documents.